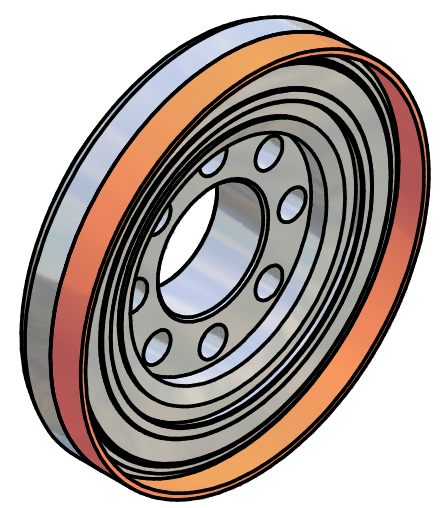


NOTES:

- 1. BRAZE PARTS ITEM 1 AND 2 IN VACUUM.
- 2. MAKE ALL MACHINING AFTER BRAZING.



Issued all design changes as Rev C (TIO) - 4/19/07 - SAB

Parts List												
ITEM		PART NUMBER			DESCRIPTION			MATERIAL		QTY		
1		100.125.001			CF FLANGE			Stainless Steel, 316		1		
2		100.124.002			COPPER SLEEVE			Copper, OFHC		1		
									Rev. C			
									Scale : 1:1		mat:	
									ASSEMBLY : 75 kW CW Input Coupler			
					Date	Name	DESIGNATION :  CONFLAT UNIT					
				Drawn	10/5/04	Churanov						
				Checked	01-05-07	VM						
				Standard								
							100.125.000 AS				1	
												A3
State		Changes		Date	Name							